

Syncable Sensor Hub

Modular Platform for
Low-Latency Algorithmic Applications

Sensor Front-End for Ethernet and Data Processing Cards



Syncable Sensor Hub

Modular Platform for

Low-Latency Algorithmic Applications

Sensor Hub Module

- + Based on Xilinx Artix UltraScale+ AU20P
- + Remote sync support
- + Combine various input & output modules to provide the ideal interfaces for your use case
- + Ideal for tasks like image signal processing

Metal Housing

- + Thermal decoupling
- + Shielding for electromagnetic immunity
- + Mechanical independence between sensor and electronics via cables or Starrflex PCBs



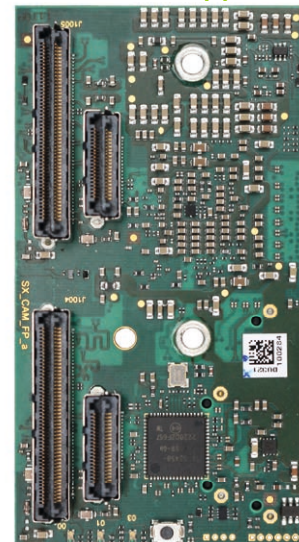
2× Application IF

- + each 4x 12G
- + two connector types each

Application module options:

- + Scientific device design, e.g.
 - OCT spectrometer
- + MIPI CSI-2 or SLVS-EC sensors
 - e.g., Sony IMX183 or IMX425
- + Other sensors, actuators, IFs over...
 - CML, LVDS, LVTTTL...
- + Cameras via standard interfaces
 - HD-SDI
 - CoaXPress
 - FPD-Link
 - GMSL
 - more on request (CameraLink...)

TOP App side



BOTTOM Host side



1× Host IF

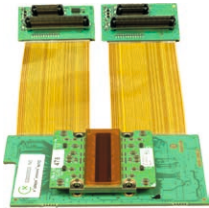
- + 4x 12G
- + two connector types

Host module options:

- + GigE Vision (1× 10G)
- + Aurora, XAUI (50G), e.g., as front-end for Alveo cards
- + PCIe over cable (x1 to x4)
- + DisplayPort
- + HDMI
- + Standard camera IFs
 - same as **Application side**

I/O Module Examples

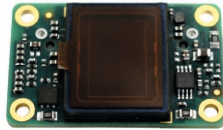
Sensor Modules



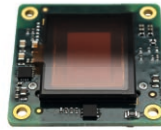
OCT
Line Sensor



Spectrometer
Line Sensor



Sony IMX183
(MIPI CSI-2)



Sony IMX425
(MIPI CSI-2,
SLVS-EC)

Host Interface



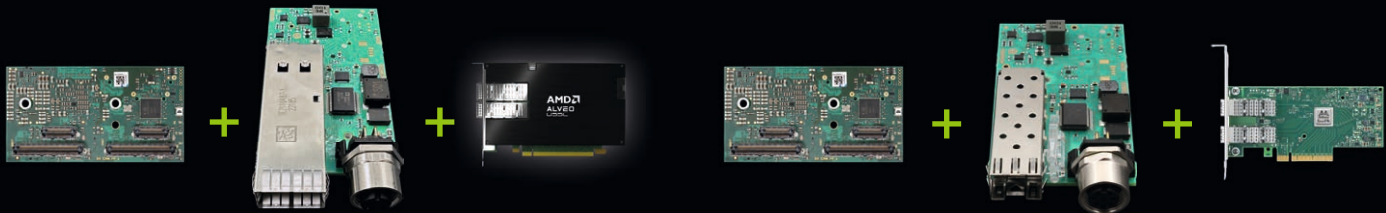
GigE Vision
(10G)



Aurora, XAUI
(50G)

www.solectrix.de

Use Case Examples



50G QSFP to Alveo Card

- + AMD Alveo accelerator card for image processing
- + XAUI or Aurora interface
- + 50 Gbps

10G Ethernet for GigE Vision

- + GigE Vision interface
- + Based on 10 Gbps Ethernet
- + Customized housing

